



Merrill House Rooms

	Page
The Owner's Suite	3
The Marchioness of Lorne Suite	4
The Loyalist Suite	5
The Tower Suite	6
The Dreaming Suite	7
The Victorian Suite	8
The Parisian Room	9
The Prince Edward Room	10
The Eastern Room	11
The Lithograph Gallery	12
The Gothic Room	13
The Future Room	14
The Velvet Room	15
The Inuit Room	16

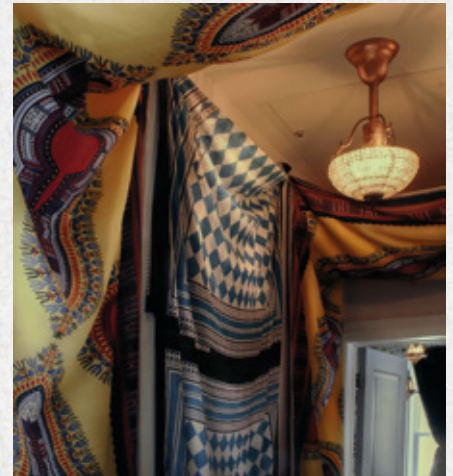


THE OWNER'S SUITE

The ultimate Prince Edward County accommodation situated on Merrill's top floor with sweepin views across our historic Picton neighbouhood.

This suite includes a large, separate living room and two washrooms. Our Owner's Suite is decorated with art and artefacts collected by our owner throughout his worldly travels.

Sleeps four with one king bed and a queen sofa bed in separate rooms.



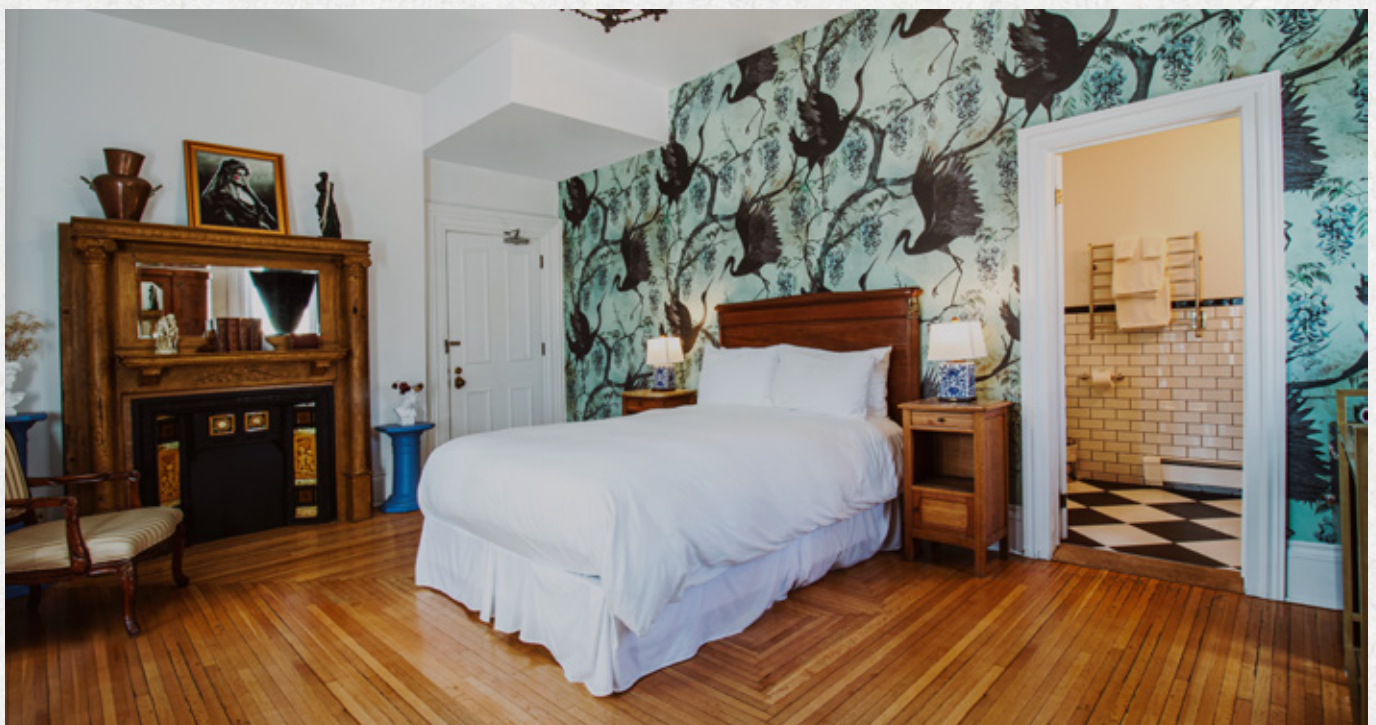


The Marchioness of Lorne S U I T E

The grandness of Merrill House's glory days is represented in fine antiques and formality. Originally a dining room, is named after the Princess Louise, daughter of Queen Victoria. Princess Louise's husband, the Marquess of Lorne, was appointed Governor-General of Canada in 1878, the year Merrill House was built.

The suite features original parquet floors and an 1880 ionic fireplace with views of Picton's historic Main Street East.

Sleeps two with a queen bed.





The Loyalist

S U I T E

United Empire Loyalists settled Prince Edward County nearly 250 years ago and ancestors of both Merrill House's first owner, Edwards Merrill, and the house's current owner, Jordan Martin de Rosales, were among them.

A nod to the importance of heritage, this suite features a separate sitting and dining room with contemporary interiors set on the garden. Sleeps four with a queen bed and queen sofa bed in separate rooms.





THE TOWER

SUITE

Located on the third floor, this suite features private access to Merrill's famed leaning tower that has been converted into a marble Jacuzzi Chamber. The suite is inspired by Gustav Klimt with views of the tree-tops.

Sleeps two with a king bed.



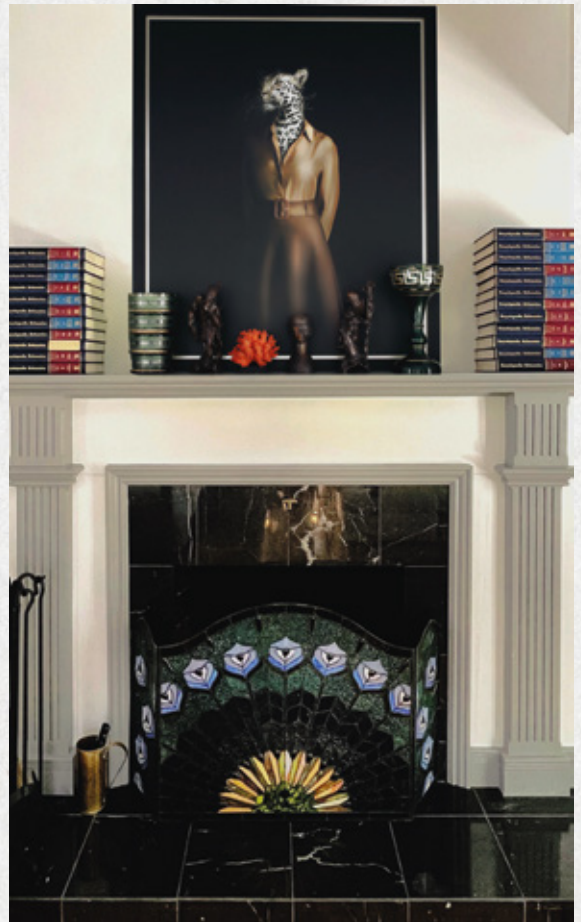


THE DREAMING

S U I T E

This suite was originally Edwards and Carolyn Merrill's bedroom; the house's master bedroom.

It features a wood-burning marble fireplace, original floors, surrealist and realist paintings, African and European artefacts, and a four-poster bed with Main Street East and garden views. Sleeps four with a queen bed and queen sofa bed.





The Victorian SUITE

Originally the bedroom of the Merrill son, this room was the only one that retained its wallpaper through Merrill's massive restoration project.

It is classically appointed with Victorian antiques and has views of Picton's historic Main Street East.

Sleeps two with one king bed.





THE PARISIAN ROOM

Originally the bedroom of the Merri-ll sisters, this room is all about chinoiserie, toile de Jouy, florals and other pretty things.

It features original floors and sweeping views of Picton's historic Main Street East.

Sleeps four with two queen beds.





THE PRINCE EDWARD ROOM

Originally a formal sitting room and retaining its original parquet floors, this calming, bucolic chamber offers views of the great Ross House.

Sleeps four with two double beds.



THE 江戸時代 ROOM

Featuring a spacious private balcony as well as antiques and artefacts from Istanbul (Constantinople) to Tokyo (Edo) with sweeping garden views.

Sleeps two with a queen bed.



The
LITOGRAPHY
Gallery

Appointed with 1860s chromolithographs from the Great Exhibition of Industrial Art and Sculpture in London with views of the great Ross House.

Sleeps two with a queen bed.





The Gothic ROOM

In the eaves of the old servant's quarters, the Gothic Room is home to antique dark-wood furniture, a pitched ceiling and original oil paintings. The room is a tribute to Gothic Revival.

Sleeps two with a queen bed.





— THE —
FUTURE
ROOM

Fit for the most stylish surrealist, the Future Room is fitted out with retro-futurist furniture, a sumptuous headboard with sterling silver finials designed by our owner...

Oh, and an invisible clog-wearing man on the ceiling. Sleeps two plus the invisible man. There is a queen bed and he sleeps in his chair.



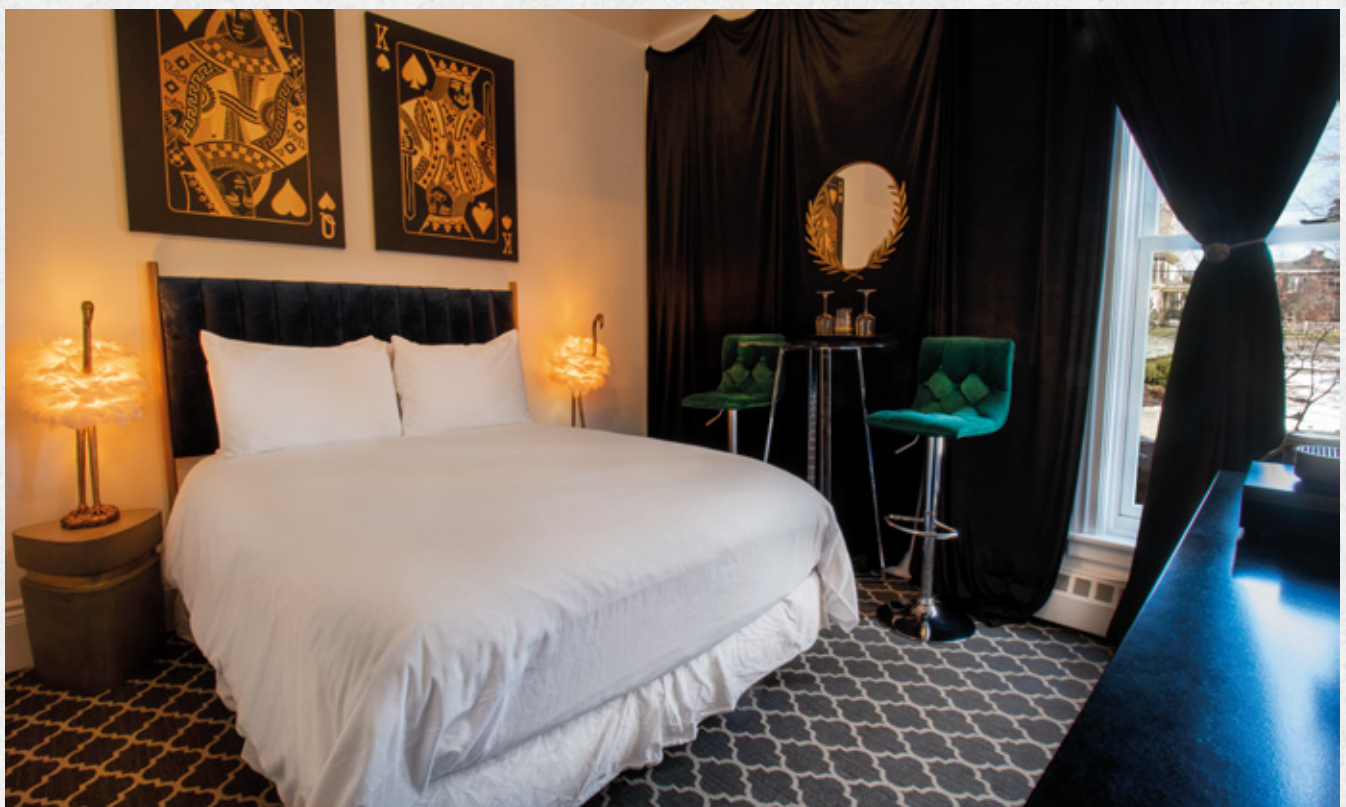
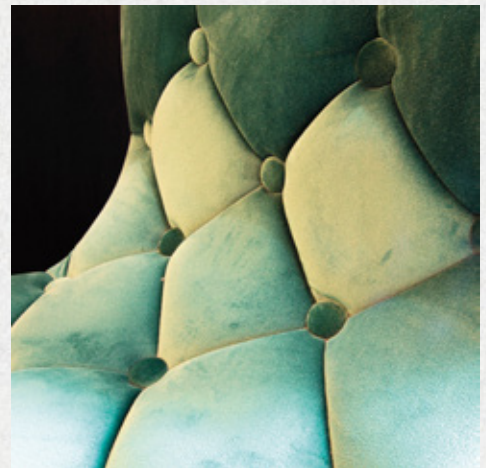
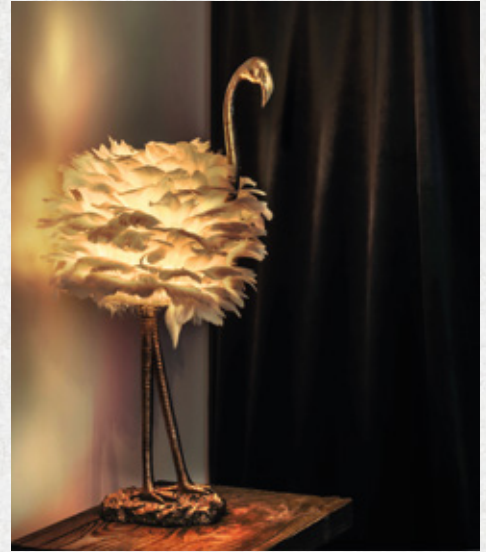


The Velvet
ROOM

Sultry and stylish, the Velvet Room takes its name from its plush black wall and furnishings.

Gold accents and fine white linens complete the decadent scene.

Sleeps two with a queen bed.





THE INUIT ROOM

Featuring a number of artworks from the Kinngait Artist Workshop, formerly Cape Dorset, in Nunavut.

Be inspired by the beauty of Canada's great North.

Sleeps two with a queen bed.

